

# Airmax Clean Mat





## Customized Management of Air Max Clean Mat

This is the very  
first step toward  
a healthy and safe  
living environment.

---

## What is Air Max Clean Mat?

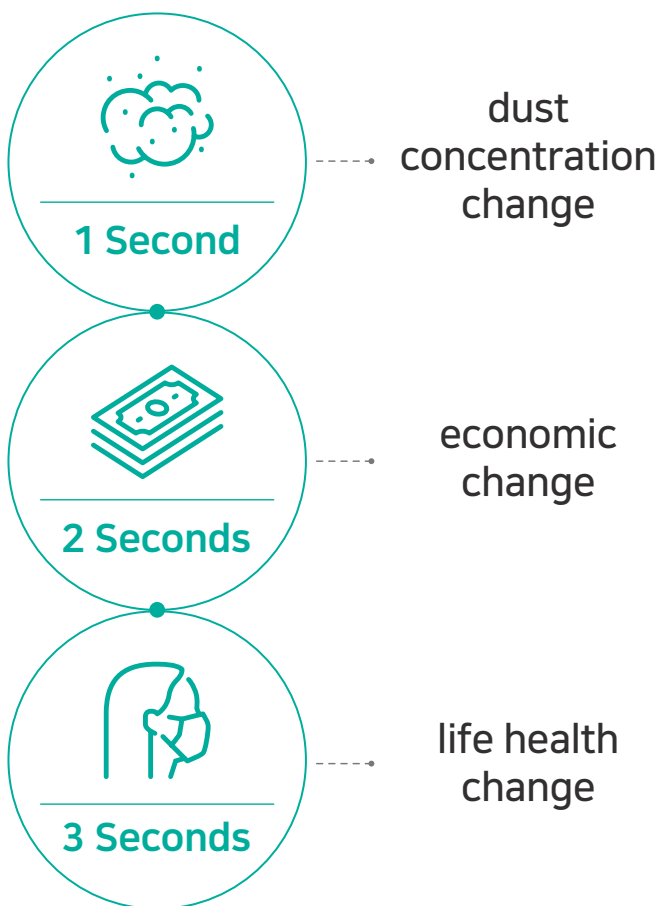
---

It provides pleasant indoor air by inhaling and blocking harmful substances such as micro-dust, bacteria, sand, and etc. that flow through the shoes in a similar principle to a vacuum cleaner. When a person steps on or approaches the mat, the sensor detects it and operates the motor automatically to inhale all the foreign substances into the mat as much as the stepped area. In addition, the rate of foreign substances removed from the mat is maximized through valves that allow external air to flow in by applying patented Euro technology.

Only 3 seconds!

# Best Among the Clean Mats

Invest 3 seconds and enjoy the pleasant indoor environment!



# The necessity of Air Max Clean Mat

---

When entering the room from the outside, the micro-dust, bacteria, and even worse, the Covid-19, and etc. can stick to clothes and shoes causing indoor pollutants directly or indirectly to cause many diseases. To prevent such a situation, the Air Max Clean Mat is necessary. The Air Max Clean Mat can create a safe and pleasant indoor environment by blocking the inflow of external pollutants with its strong suction power.

## Test Results

---

Performance Measurement	Unit	Result of Measurement		Remark
Wind Speed	m/s	26.9		Average
Noise	dB(A)	52.8		Maximum
Foreign Substances Recovery Rate	%	90.2		Average
Micro-dust Reduction Rate	%	0.3 $\mu\text{m}$	85.8	Reduction rate for after using 10 times of operation
		0.5 $\mu\text{m}$	92.8	

# Advantages of Air Max Clean Mat

---

## 1. Simple Operation

---

It operates when the mat is stepped on or approached by a sensor detection method, and blocks harmful substances from entering the room just by walking on the mat.

## 2. Strong Durability

---

Made of STS304 (stainless steel), it is resistant to external shock and corrosion, so it can be used for a long period of time without any problems even in snowy or rainy weather.

## 3. Easy Maintenance and Management

---

Easy and simple operation and the dust bag which collects various substances can be easily replaced without tools. The Air Max Clean Mat delivers information to the administrator's PC, making it easy to grasp the status of the product. (Including defining its operation, operating time, life of consumables, replacement time, and etc.)

## 4. Customized According to the Installation Location

---

Practical customization is available according to the characteristics of different sites for each company.

## 5. Air Purification Function

---



# How to Use the Air Max Clean Mat

---



Just step on and walk the mat.



Clean mat can block 80% of micro-dust flowing in from shoes and improve indoor air quality.

# Product Specifications

## ● Air Max Clean Mat Dust Collector

<b>Size</b>	240*320*540	
<b>Motor</b>	AC	280W, 220V
	BLDC	350W, 48V
<b>Sensor Type</b>	Pressure Sensor	
	Photo Sensor	
	Human Detects Sensor	
<b>Dust Collecting Method</b>	Dust Bag Method	
	HEPA Filter Method	
<b>Operation Method</b>	Operation Time Setting	0 – 99 (sec)
<b>Air Purification Function</b>	Available	

# Product Specifications

- Air Max Clean Mat (Customization available)**

<b>Maximum Size</b>	1,200*3,000 / 3,000*1,200	
<b>Standard Size</b>	For One Door	700*600*20
		700*1000*20
		1000*1000*20
	For Two Doors	1800*1000*20
1600*1000*20		
1500*1000*20		
<b>Mat Load</b>	For People	200kg
	For Trucks	Less Than 1t Less Than 5t
<b>Distance between balls</b>	Left and Right Space	25mm
	The Upper and Lower Sides Space	30mm
<b>Material of Ball</b>	STS 304	
<b>Material of Mat</b>	STS 304 Diamond Etching	



# Installation Types



## Installed Type (AIRMAX-P)

This model is mainly installed in places where people enter, and foreign substances that flow into the soles of shoes are inhaled and blocked.



## Embedded Type (AIRMAX-W)

This model does not only absorb and block foreign substances that flow into the soles of shoes, but also wheels of automobile equipment such as trucks and forklifts.



## Access Floor Type (AIRMAX-AF)

This model is installed in the access floor structure, removing the flooring material and replacing the AIRMAX-AF in that place.



## Gates Type (AIRMAX-G)

This model is installed between gates to which people and trucks enter.

# Installation Types



## Air Shower Room Type (AIRMAX-CR)

This model is installed inside the air shower, and it operates while the air shower is running.



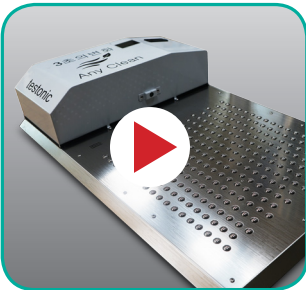
## AIRMAX - Air Curtain Type

This model is installed on both sides of the entrance to strongly discharge air in both directions, blocking the external air and preventing the inflow of micro-dust and various harmful bacteria.



## Truck Type (AIRMAX-W)

This model not only absorb and sterilize foreign substances that flow into the soles of shoes, but also do the same on wheels of automobile equipment such as trucks and forklifts.



## Disinfection and Sterilization Mat Type (Any Clean)

The disinfectant spraying function is added in this type to ensure that pollutants do not flow into the room; more reliable block of the inflow of contaminants is expected.

# Installation Cases



Gates Type - SK Hynix



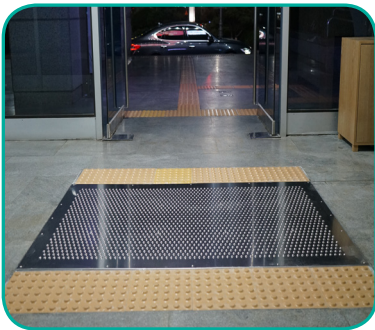
Gates Type - Kookmin Bank



Truck Type - LS Electric



Embedded Type -  
LG Household & Health Care



Embedded Type -  
Ansan City Hall



Installed Type -  
Cheung City Hall

# Installation Cases



**Installed Type -  
Jungnang-gu Office**



**Access Floor Type -  
Kookmin Bank**



**Air Shower Room Type -  
LG Household & Health Care**



**Parking Lot Type - Daegu  
Underground Parking Lot**



**Air Curtain installed in  
Donghae Thermal Power  
Generation Department**



**Product installed at the entrance of  
Control Computer Room of Busan  
Power Plant**

# Installation Cases



Stairs Type installed in 1 block B of Bundang Power Plant



Access Type installed in Central Control Office of Bundang Power Plant



Product installed in Power Plant of Seoincheon



Embedded Type installed in Sinboryeong Thermoelectric power Plant



Truck Type installed in Youngheung Power Plant



Product installed in KHNP, Hangang Hydro Power Site's Dcs Room