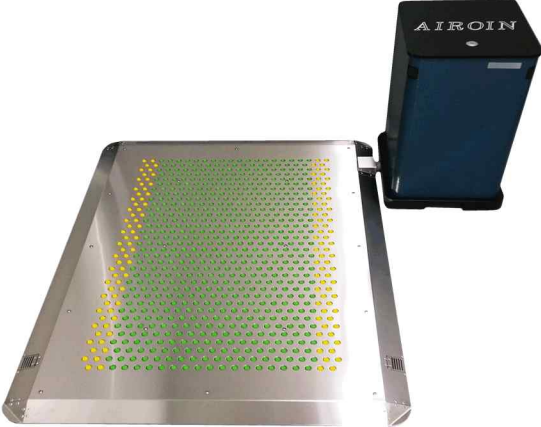


Instruction

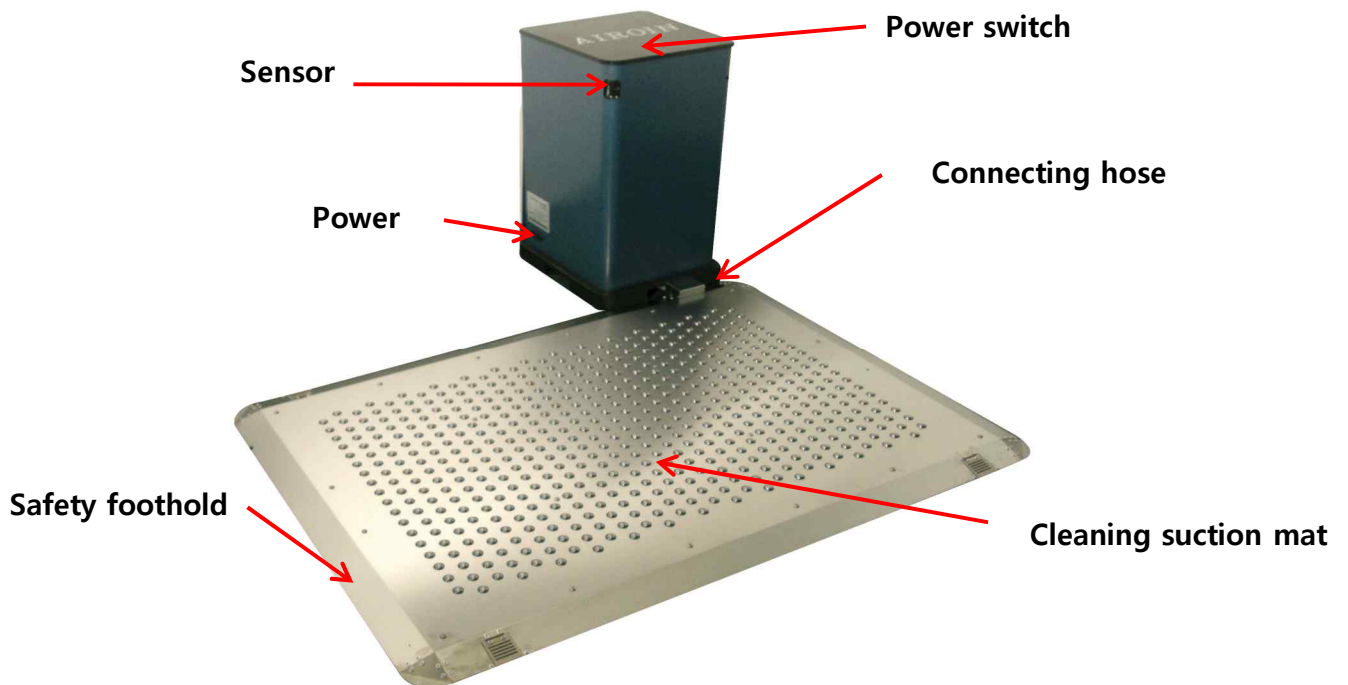


Eco-Friendly Company

TESTONIC

AIRMAX CLEANMAT

1. Names of all parts



Instructions for all parts

- **Power switch** : Connect the power cable and turn on the power switch on the lid (Green light means working well)
- **Sensor** : When approaching the mat, sensor recognize it and works.
Set the sensitivity of sensor to detect a person properly; sensing distance is 2 meters.
- **Timer** : It controls working time of dust collector.
There is the timer inside of the dust collector. Working time is set by timer.
Default 3 seconds
- **Connecting hose** : Connecting the dust collector and clean mat(suction mat) to boost the power of suction
- **Clean mat** : Treading on the mat gets the dust collector working and only sucks the spot treaded.
- **Slope** : Prevent a tripping and makes wheel chair and cart to pass safely.

2. How to install Air Max

▣ A Type Dust Collector

- Mat Setting –

- 1) Check the place to install the Clean Mat around the entrance.
- 2) Put the Clean mat on the floor. The direction of the pipe is the spot where the dust collector is placed. So it is required to be the direction which is easy to connect the power.
- 3) Place the dust collector to make a connection with mat and insert the hose from Clean Mat to hole in the dust collector.



- Dust Collector Setting –

- 4) Place a Dust Collector beside the Clean Mat.
- 5) Make a connection to the power source.
- 6) Press down the power switch on top of the Dust Collector.
- 7) Fix the direction and sensitivity of sensor.
 - ① First, turn off the one of the sensor.
 - Slightly unscrew the screw with a slender screwdriver, screwdriver get into from the hole on the corner of precipitator's lip.

- Push the loose sensor to the right and then take the rubber packing on the left side of sensor out. Loosen the screw on the left side of the sensor with a short screwdriver in order for sensor not to notice anything.

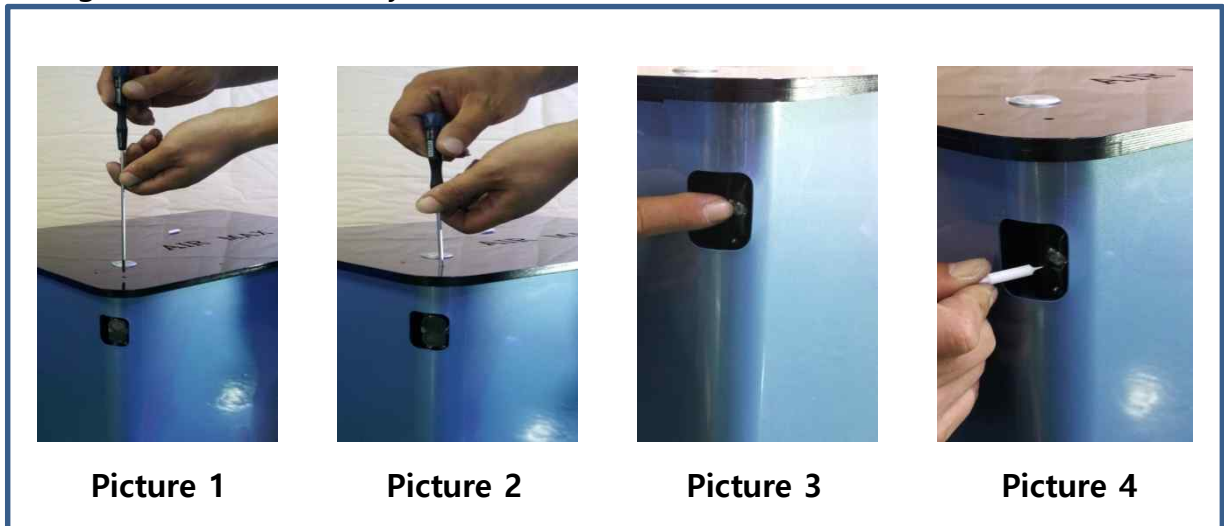
- Check if sensor notices your hand. If not, sensor adjustment is clear. Put the long screwdriver into the hole on the top of the dust collector again, and then screw it tightly.

② Before adjusting the sensor, check the direction and the distance of it.

- If the distance of the sensor is too far or too close, put the long screw driver into the hole on the top of the dust collector and loosen it.

- Push the loose sensor to the right and then take the rubber packing on the left side of sensor out. Adjust the distance of the sensor by turning the screw to the left or right. (Left to make it closer, Right to make it further.)

- After the sensor adjustment, put the long screwdriver into the hole again. And then tighten the screw firmly.



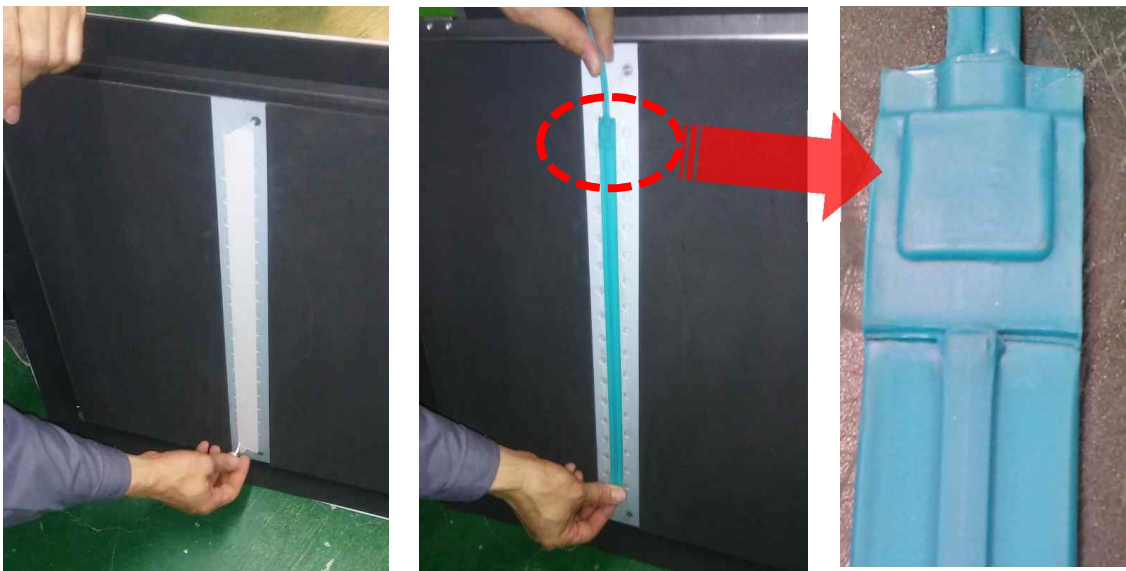
How to adjust the sensor

9) Adjustment working hours by timer.

■ B Type Dust Collector

- Sensor Setting –

- 1) Take off a paper tape to be exposed a sticky part.
- 2) Put a foot sensor on the double-sided tape to fix.
A protrusion side must be shown. See picture.



- Sensor Connecting –

- 1) Open a cover.
- 2) Take a control box out.
- 6) Connect a sensor to connector of control box.







- Hose Connection -

- 1) Get a hose from Clean Mat.
- 2) Check where the hole to be connected with hose is.
- 3) Insert the hose to the hole.



▣ Timer Setting

- 1) Default value is 3 seconds. See below picture.
- 2) Press a button to change working time. 
 - 1st Press - A right number will be flashed to set a hundredth of second.
 - 2nd Press - A center number will be flashed to set a tenth of second.
 - 3rd Press - A left number will be flashed to set a second.
- 3) The number on display can be decreased/increased with button  
Press the button to set the proper working time when the number is flashed.
- 4) Press a button to save after fix the time. 



▣ Safety Timer

- 1) This timer protects a Dust Collector.
- 2) If the unit dose not stop by error, it will be stopped by a Safety Timer.
- 3) Default value is 2 minutes; if the unit works longer than 2 minutes, the timer makes the unit stop.
- 4) It is recommended not to change.



3. How to replace **consumable stores**.

1) Replacement of the dust bag

When taking the dust bag out:

First, open the cover at the back of the dust collector. It has a dust bag like a usual vacuum cleaner. It can be removed by pushing up the support fixture. The dust bag connected with the hose should be downside not to get the dust out.

When replacing the dust bag:

On the contrary of getting rid of the dust bag, you should put the one dust bag first to the fixed support fixture and put into the hose in accordance with the hole for the dust bag. After that, put it by pushing it up the other support fixture and put it down to lock it.

- Replacement of dust bag period : 1 – 2Months



2) How to replace HEPA filter outlet

It is attached at the back of the dust collector. First, loosen the piss and get the used filter out. After that, put the new one. Following that, rinse off the filter net and get it dried to attach again.

- Replacement of HEPA filter period: 6– 7 Months
(Check and replace depending on the amount of the usage)



HEPA filter



4. Matters that require attention

- 1) This product is 220V Single phase current.
- 2) Do not use the product with wet hand.
- 3) When you use cleaning mat outdoor, it should be protected from rain and snow.
- 4) Suctioning power can be diminished if the dust bag is full.
- 5) The control box should be installed indoor.
- 6) Do not shock too much on the machine.
- 7) Stay away from the inflammables.
- 8) Do not control it by yourself even if it doesn't work and call the customer center right away.
- 9) Completely understand the instruction and always keep it.
- 10) Replace the filter on a regular basis.

5. How to handle the machine when it doesn't work?

Situation	Cause	Advice
Power is not working on	The plug is not connected	Connect the plug
	The power switch is off	Turn on the power switch
Monitor doesn't work	The sensor is broken	Check the sensor light
	Fuse is cut off	Replace the fuse
	Timer working lamp doesn't work.	Replace the timer
	The monitor is broken	Replace the monitor
Monitor keeps working	The light of the sensor doesn't turn off	Replace the sensor
	Timer power light doesn't flicker	Replace the timer
Suctioning power diminished dramatically	When the dust bag is full	Replace the dust bag
	Hose is broken or blocked	Replace the hose
Sensor doesn't work	Sensor light doesn't work even when it gets something	Replace the sensor



6. Product Specification

Main Function	Removing fine dust and harmful substances.	
Operation Method	Suction type	
Control Mode	Sensor, Timer	
Filtering Equipment	Primary filter: Dust bag Secondary filter: HEPA filter (0.0003mm)	
Rated Voltage	220V 50/60Hz(A single phase)	
Power Consumption	300W Below	
Mat sizes	<ul style="list-style-type: none"> ① 500 X 500 X 25(mm) ② 500 X 1000 X 25(mm) ③ 700 X 600 X 25(mm) ④ 700 X 1000 X 25(mm) ⑤ 500 X 2000 X 25(mm) ⑥ 1000 X 1000 X 25(mm) 	
Dust Collector Size	A TYPE 320 X 350 X 580 (H)	B TYPE 400 X 235 X 270 (H)
Weight	Mat : 13KG / Dust Collector(M2) : 20KG / Foothold : 6KG	

7. Air Max Checklist

	Item		Regular inspection interval	Check point	Condition	Remarks
1	Mat	Brush condition	Once a month	Naked eye		
2		Cleanliness state		Naked eye		
3		Spring condition		operation		
4		Inhale condition		anemometer		
5	Control Box	Dust bag	Once a month	Replace		
6		Functional condition		Naked eye		
7		Sensor condition		Naked eye		
8		Working temperature		thermometer		
9		Hose condition		Naked eye		
10		Noise		Acoustimeter		
11		HEPA filter	1 Year	Replace		
12	24V power	TESTER				



Product Warranty

◆ In case of selling AIR MAX, please fill in all the blanks below.

Product Name	AIR MAX	The term of Guarantee	
Model Name		Customer's Address	
Date of Purchase	(MM/DD/YYYY)	Customer's Name	
Expiration Date of Warranty	(MM/DD/YYYY)	Contact Information	
SERIAL NO.		Store	

AIR MAX has successfully passed the overall test through the quality control system. In case of the malfunction in transit or in normal conditions, We guarantee free repair services as stated in product warranty.

This product warranty is not reissuable..

◆ The cases you are charged for repair cost

- 1) Expiration of the warranty
- 2) Mishandling failure by the customer
- 3) Malfunction by Natural disaster, fire, flood
- 4) When you convert or repair the product by yourself
- 5) When the stated matters are not enough or you lose the letter of guarantee



Address: #207 Vision B/D, 743 Choji-dong, Danwon-gu, Ansan-si, Gyeonggi-do, Korea¹²
Office: +82 31-432-4380 Mobile1: +82 10-3430-8074 Mobile2: +82 10-3553-8700